


Beanie with cuff

Turn up edge to protect your head from wind and cold.


Recycled polyester

Fiber made from polymers obtained by recycling plastic bottles.


Cold proof

Keeps you warm, dry, & light in the most rigid cold weather conditions.

ANDY

** The composition is undergoing to an upgrade in order to reduce the product impact and it is subordinate to the product lot number. Please refer to the composition shown on the composition label.*

Fine rib-knitted beanie with regular cuff and fully fashioned top. Made of 50% recycled polyester and 50% acrylic. Single knitting to hold its shape well.

Technical details

Composition: Main fabric: 100% Polyester

Gauge: 6

Machine: Flat

Others: Cold Proof

Product weight kg: 0,082

Structure: Rib 1x1

Customs code: 6505.00.90

Fabric: Main fabric: 100% recycled polyester

Layer: Single

Made in: China

Packing: 24 x 144 pcs

Size: One size fits all

Type: Beanie with cuff

Where to customize (Centimeters)

	Front	Back	Closure	Right	Left
Print	-	-	-	-	-
Embroidery	12 x 4,5	12 x 4,5	-	12 x 4,5	12 x 4,5
Heat transfer	-	-	-	-	-

Washing instruction



Hand wash/ do not bleach/ do not dry by tumble dryers/ dry flat/ do not iron/ do not dry clean/ do not professional wet clean

Color variants (TPX / Pantone)

LIGHT BLUE



BODY: 14-4214 / 644-C

BEIGE



BODY: 13-0607 / 482-C

BURGUNDY



BODY: 19-1627 / 504-C

LIGHT GREY



BODY: 14-4203 / COOL-GRAY-6-C

DARK GREY



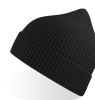
BODY: 19-4104 / 7540-C

MUSTARD



BODY: 15-0953 / 7550-C

BLACK



BODY: 19-4006 / BLACK-6-C

NAVY



BODY: 19-4010 / 7547-C

OLIVE



BODY: 19-0515 / 7771-C

ACID GREEN



BODY: 13-0535 / 372-C