

PR682 'Orchid' Beauty and Spa Tunic

Description

The 'Orchid' is available in twelve colours and features an asymmetric design with eight 'bar' buttons down the front. The side vents and princess seams create a flattering fit whilst the short sleeves and back pleat allow complete ease of movement.

Product Features:

- Flattering feminine fit with bust and back darts
- Mandarin collar
- Eight 'bar' button fastening
- Back pleat for ease of movement
- Princess seams

Available In:

6, 8, 10, 12, 14, 16, 18, 20, 22, 24

Certifications:

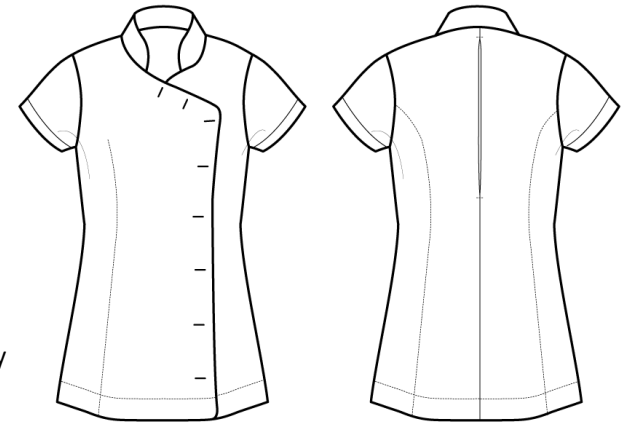


Colours:

Colour	Pantone	C	M	Y	K
Black	Black c	0	0	0	100
Burgundy	209c	20	97	40	58
Dark Grey	425c	52	29	30	78
Hot Pink	215c	66	100	26	24
Navy	533c	95	72	15	67
Purple	7447c	77	85	6	18
Turquoise	7703c	79	2	10	11

Fabric:

100% Polyester plain weave, 185gsm.



Suggested Decoration:

Screen Print, Transfer Print, Embroidery

Country of Origin:

China

Commodity Code:

6211431000

Features:



Wash Care:



Carton Information:

Sizes	Carton	Pack	SKU's	Carton Weight	Carton Dimensions
All Sizes	12	3	70	6.2 kg approx.	60cm x 44cm x 17cm

Garment Sizes:

Size	6	8	10	12	14	16	18	20	22	24
Bust to fit"	31	33	35	37	39	41	43	45	47	49
Bust to fit cm	79	84	89	94	99	104	109	114	119	124
Bust actual cm	89	94	99	104	109	114	120	126	132	138
Coll size	2XS	XS	S	M	L	XL	2XL	3XL	4XL	5XL
Back length cm	70	71	72	72	73	74	75	76	77	78